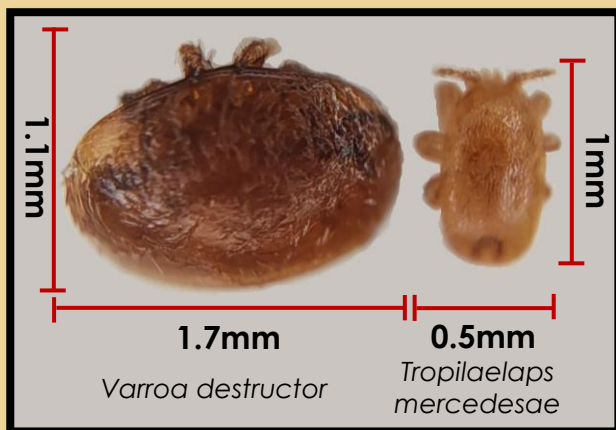


8. Repeat steps 1 to 7 on any other colonies in the apiary you wish to monitor. The icing sugar from all the samples can be combined in the sealable plastic bag or container.
9. When you return home place a fine white muslin cloth or white coffee filter in a sieve. Place the icing sugar in the cloth or coffee filter and slowly wash the sugar through the cloth or coffee filter. Any mites present in the sample can then be seen against the white cloth or coffee filter.



**REMEMBER!**  
*Tropilaelaps*  
are about  
1/3 the size  
of *Varroa*.

## What should I do if I find *Tropilaelaps* in my hives?


*Tropilaelaps* are a statutory notifiable pest and any suspect sightings must be reported to the National Bee Unit [www.nationalbeeunit.com](http://www.nationalbeeunit.com), 0300 303 0094, [nbu@apha.gov.uk](mailto:nbu@apha.gov.uk).

You can also find out more information on our website [www.phira-science.org](http://www.phira-science.org) and by following us on social media.

 @PHIRA-Science

 phirascience

 PHIRA-Science

 @phirascience



©PHIRA-Science 2025



# AN ICING SUGAR ROLL FOR TROPILAEELAPS DETECTION

# Why use an icing sugar roll for *Tropilaelaps* detection?

*Tropilaelaps* are parasitic mites that reproduce in honey bee brood in much the same way that *Varroa* do. *Tropilaelaps* have a short phoretic phase, where they spend 1 or 2 days on the combs and adult bees before returning to the sealed brood to reproduce. *Tropilaelaps* is not currently in the UK, however it is important that beekeepers proactively monitor for *Tropilaelaps*, even if they don't suspect an infestation, as early detection and action will be crucial to eradicating an incursion of this deadly parasitic pest. Using an icing sugar roll of adult bees to monitor for *Tropilaelaps* is a quick, easy and non-destructive way of monitoring your colonies.

## How to monitor using an icing sugar roll.

You will need –

- A 500ml container with a mesh lid **or** a commercially available mite checker.
- Some icing sugar, approximately 50g per hive you want to monitor.
- A half cup measuring scoop.
- A hive roof or large bowl like a washing up bowl.
- A sealable plastic bag or container to collect the icing sugar.
- A fine white muslin cloth or coffee filter.
- A sieve.



Watch a video of this technique here.

1. Open your colony, and while completing your normal inspection of the brood select a frame with a good covering of worker bees. Check the frame for the queen and move her to safety if present. N.B. This is not essential as the technique will not harm the queen if she is inadvertently sampled.
2. Firmly shake the bees from your selected brood frame into the hive roof or large bowl. Tap the hive roof or bowl on the ground so all the bees are knocked into a corner.
3. Take a scoop of bees using the half cup measuring scoop. Use your finger or hive tool to gently level the top of the scoop. This will give you approximately 300 bees.
4. Add the scoop of bees to your container with a mesh lid or mite checker. Add a half cup scoop of icing sugar to the container with the bees and close the lid.



5. Gently rotate the container or mite checker for 1 minute so the bees become covered in icing sugar. Leave the container in a shady place to stand for 1 minute then repeat this step. The bees need time to groom themselves to dislodge any mites present.

6. Shake all of the icing sugar into a sealable plastic bag or container.
7. Return the bees to the brood box and close the hive.

