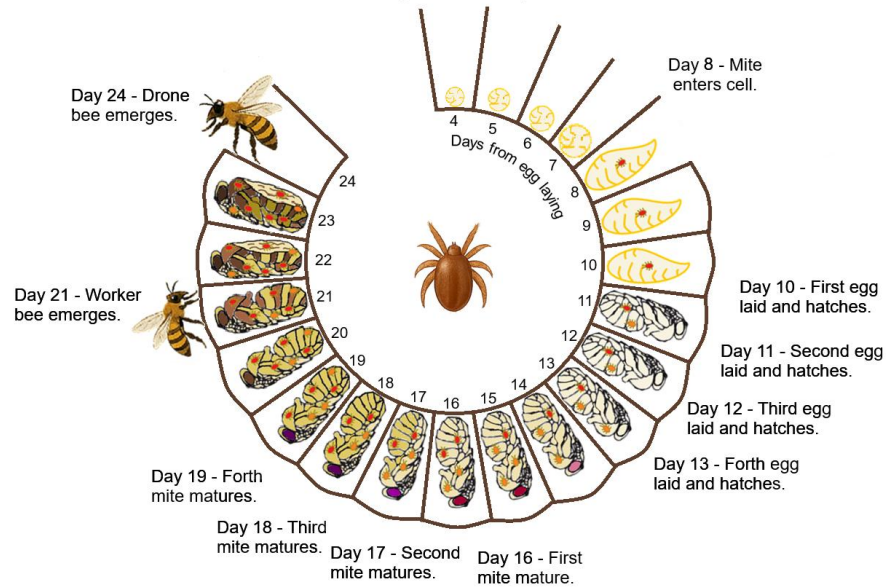




Tropilaelaps mercedesae

Tropilaelaps spend 1 - 2 days outside of brood cells before either entering new brood cells to reproduce or attaching to bees to disperse.



Varroa destructor

Varroa spend around 7 days feeding on bees before entering new brood cells to reproduce or attaching to bees to disperse.

Day 7 / 8 - Mite enters cell.

